

The Kimbles Bridge detour will begin on Monday, August 16, 2021 and be a long-term detour.

Traffic utilizing Kimbles Road as a connector between US Route 6 and PA 590 may utilize:

Tow Path Rd to PA 590 (1.5 miles) + PA 590 to US Route 6 (3.4 miles) + US Route 6 to Kimbles Road (4.8 miles) = 9.7 miles

Or,

Tow Path Road to Rowland, PA (8.4 miles) + Rowland Road to Greeley Road (4.5 miles) + Greeley Lake Road to US Route 6 (1.7 miles) + US Route 6 to Kimbles Road (6.7 miles) = 21.3 miles

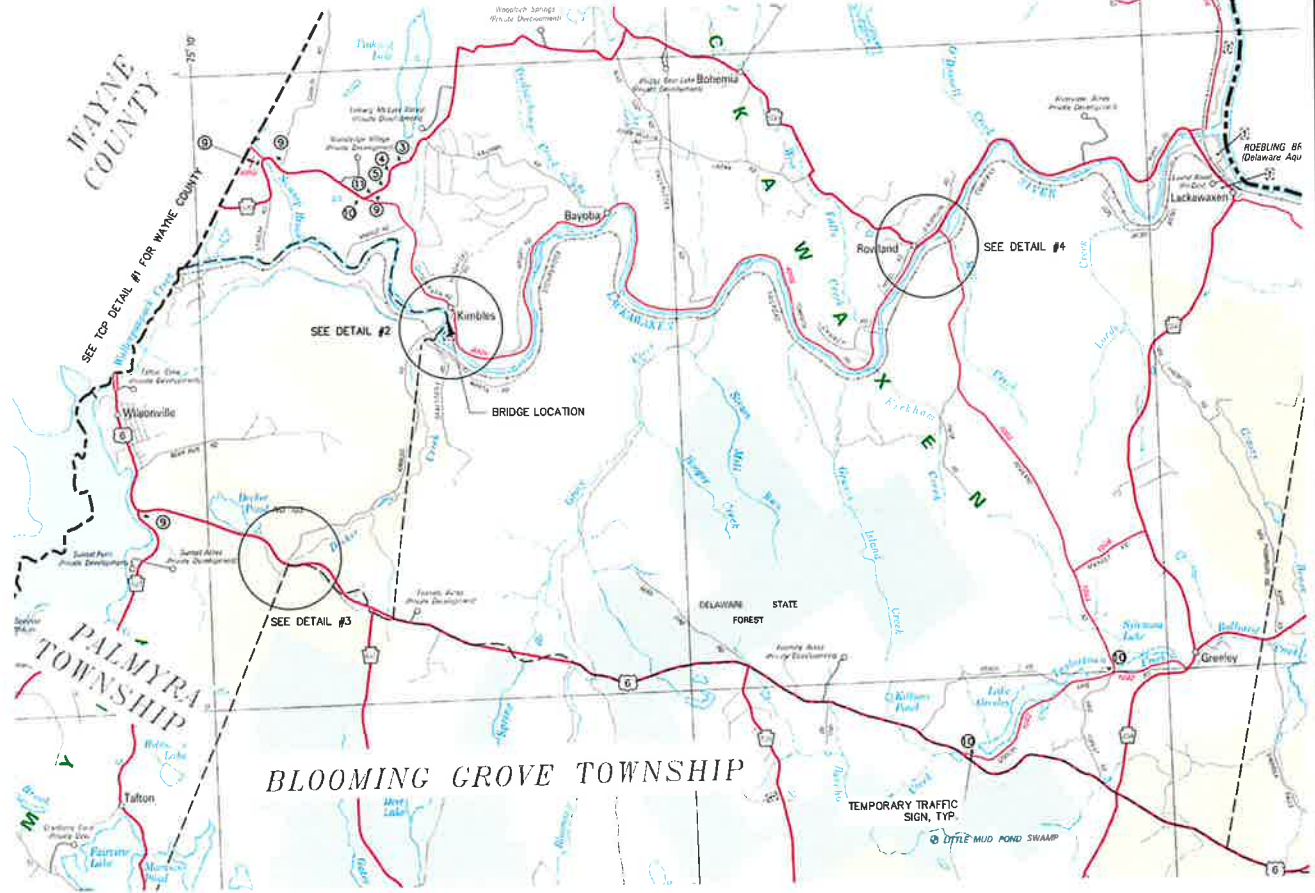
DISTRICT	COUNTY	ROUTE	SECTION
4-0	PIKE	KIMBLES RD	
LACKAWAXEN TOWNSHIP - PALMYRA TOWNSHIP			
REVISION NUMBER	REVISIONS	DATE	BY



TCP DETAIL #1

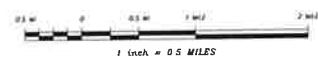
LEGEND

- 1.5" WIDE CONC. BRIDGE
- 1.5" WIDE BRIDGE
- 2.0" WIDE BRIDGE
- 2.5" WIDE BRIDGE
- 3.0" WIDE BRIDGE
- 4.0" WIDE BRIDGE
- 5.0" WIDE BRIDGE
- 6.0" WIDE BRIDGE
- 7.0" WIDE BRIDGE
- 8.0" WIDE BRIDGE
- 9.0" WIDE BRIDGE
- 10.0" WIDE BRIDGE
- 11.0" WIDE BRIDGE
- 12.0" WIDE BRIDGE
- 13.0" WIDE BRIDGE
- 14.0" WIDE BRIDGE
- 15.0" WIDE BRIDGE
- 16.0" WIDE BRIDGE
- 17.0" WIDE BRIDGE
- 18.0" WIDE BRIDGE
- 19.0" WIDE BRIDGE
- 20.0" WIDE BRIDGE
- 21.0" WIDE BRIDGE
- 22.0" WIDE BRIDGE
- 23.0" WIDE BRIDGE
- 24.0" WIDE BRIDGE
- 25.0" WIDE BRIDGE
- 26.0" WIDE BRIDGE
- 27.0" WIDE BRIDGE
- 28.0" WIDE BRIDGE
- 29.0" WIDE BRIDGE
- 30.0" WIDE BRIDGE
- 31.0" WIDE BRIDGE
- 32.0" WIDE BRIDGE
- 33.0" WIDE BRIDGE
- 34.0" WIDE BRIDGE
- 35.0" WIDE BRIDGE
- 36.0" WIDE BRIDGE
- 37.0" WIDE BRIDGE
- 38.0" WIDE BRIDGE
- 39.0" WIDE BRIDGE
- 40.0" WIDE BRIDGE
- 41.0" WIDE BRIDGE
- 42.0" WIDE BRIDGE
- 43.0" WIDE BRIDGE
- 44.0" WIDE BRIDGE
- 45.0" WIDE BRIDGE
- 46.0" WIDE BRIDGE
- 47.0" WIDE BRIDGE
- 48.0" WIDE BRIDGE
- 49.0" WIDE BRIDGE
- 50.0" WIDE BRIDGE
- 51.0" WIDE BRIDGE
- 52.0" WIDE BRIDGE
- 53.0" WIDE BRIDGE
- 54.0" WIDE BRIDGE
- 55.0" WIDE BRIDGE
- 56.0" WIDE BRIDGE
- 57.0" WIDE BRIDGE
- 58.0" WIDE BRIDGE
- 59.0" WIDE BRIDGE
- 60.0" WIDE BRIDGE
- 61.0" WIDE BRIDGE
- 62.0" WIDE BRIDGE
- 63.0" WIDE BRIDGE
- 64.0" WIDE BRIDGE
- 65.0" WIDE BRIDGE
- 66.0" WIDE BRIDGE
- 67.0" WIDE BRIDGE
- 68.0" WIDE BRIDGE
- 69.0" WIDE BRIDGE
- 70.0" WIDE BRIDGE
- 71.0" WIDE BRIDGE
- 72.0" WIDE BRIDGE
- 73.0" WIDE BRIDGE
- 74.0" WIDE BRIDGE
- 75.0" WIDE BRIDGE
- 76.0" WIDE BRIDGE
- 77.0" WIDE BRIDGE
- 78.0" WIDE BRIDGE
- 79.0" WIDE BRIDGE
- 80.0" WIDE BRIDGE
- 81.0" WIDE BRIDGE
- 82.0" WIDE BRIDGE
- 83.0" WIDE BRIDGE
- 84.0" WIDE BRIDGE
- 85.0" WIDE BRIDGE
- 86.0" WIDE BRIDGE
- 87.0" WIDE BRIDGE
- 88.0" WIDE BRIDGE
- 89.0" WIDE BRIDGE
- 90.0" WIDE BRIDGE
- 91.0" WIDE BRIDGE
- 92.0" WIDE BRIDGE
- 93.0" WIDE BRIDGE
- 94.0" WIDE BRIDGE
- 95.0" WIDE BRIDGE
- 96.0" WIDE BRIDGE
- 97.0" WIDE BRIDGE
- 98.0" WIDE BRIDGE
- 99.0" WIDE BRIDGE
- 100.0" WIDE BRIDGE



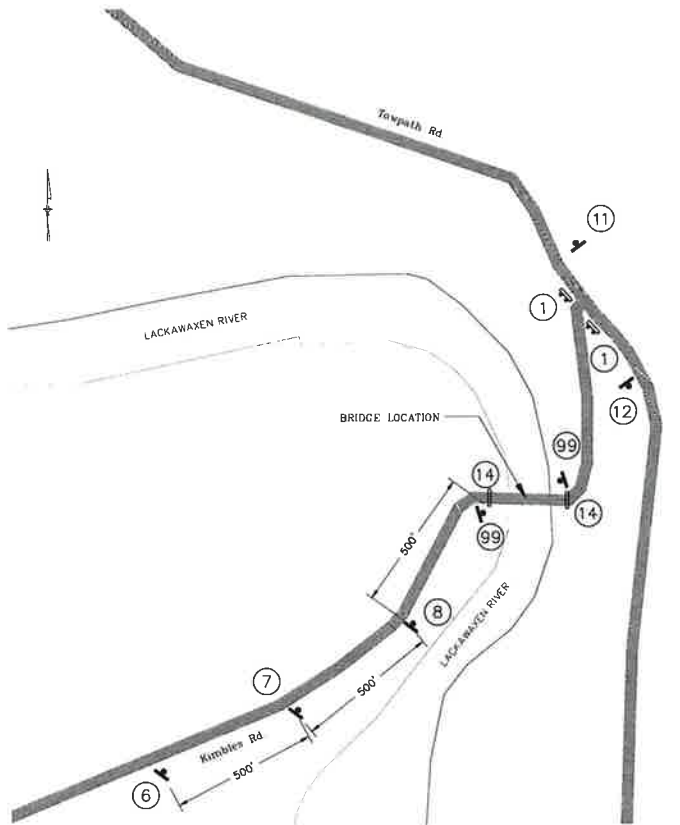
BLOOMING GROVE TOWNSHIP

DETOUR PLAN

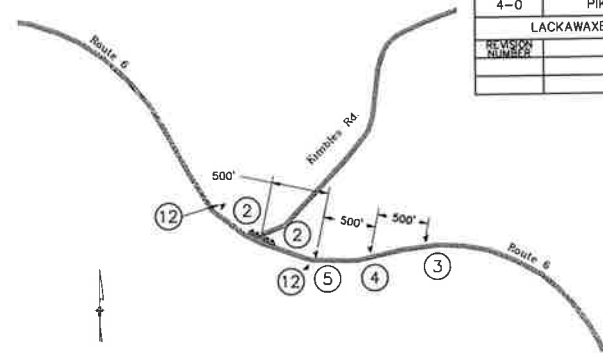
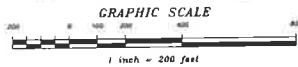


		McGOEY, HAUSER and EDSALL CONSULTING ENGINEERS, D.P.C. <small>1000 North 3rd Street, Suite 100 P.O. Box 100 Piquette, Pa 16003</small>		Plans for: KIMBLES ROAD BRIDGE REPAIR Lackawaxen Township Pike County, PA	
		Revision Date Description 2 08/29/21 CONSTRUCTION SET		Design 08/24/21 Drawn 07 Eng. Checked 08 Reviewed 03 Date 8/26/21 Job No. 18-120	
			DETOUR PLAN		C11

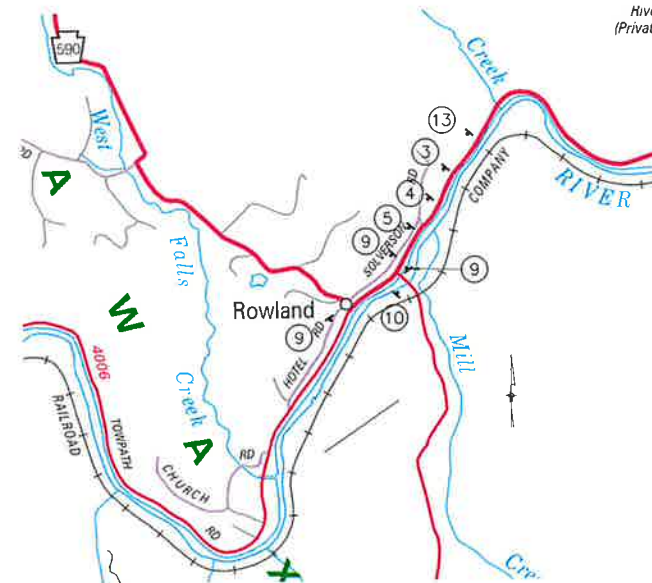
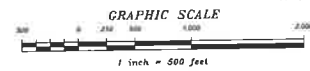
DISTRICT	COUNTY	ROUTE	SECTION	SHEET
4-0	PIKE	KIMBLES RD	---	3 OF 4
LACKAWAXEN TOWNSHIP - PALMYRA TOWNSHIP				
REVISION NUMBER	REVISIONS	DATE	BY	



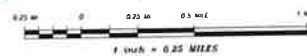
TCP DETAIL #2



TCP DETAIL #3

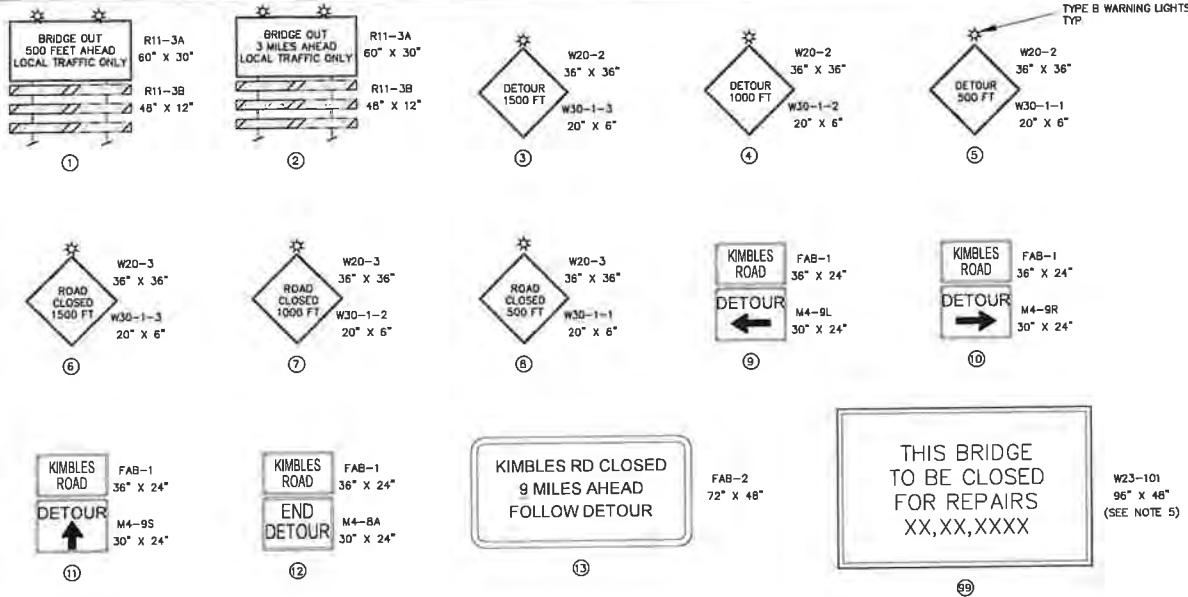


TCP DETAIL #4



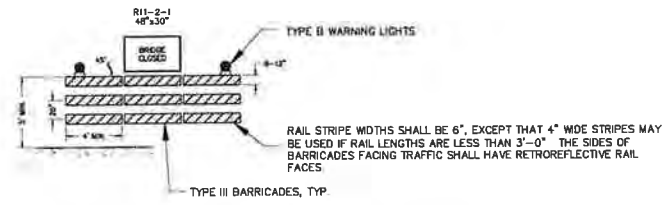
			D McGOEY, HAUSER and EDSALL CONSULTING ENGINEERS, D.P.C. <small>22 South Centre Street Palmyra, PA 19351 (717) 261-1100</small>		Plans for: KIMBLES ROAD BRIDGE REPAIR	
			Lockawaxen Township <small>1000 North 1st Street Palmyra, PA 19351</small>		Pike County, PA <small>100 North 1st Street Pottsville, PA 17854</small>	
Revision	Date	Description	Design	Drawn	Checked	By
1	04/24/21	CONSTRUCTION SET				
			<input type="checkbox"/> Concept <input type="checkbox"/> Preliminary <input type="checkbox"/> Final <input checked="" type="checkbox"/> Construction		DETAIL PLANS C12	

DISTRICT	COUNTY	ROUTE	SECTION
4-0	PIKE	KIMBLES RD	---
LACKAWAXEN TOWNSHIP -- PALMYRA TOWNSHIP			
REVISION NUMBER	REVISIONS	DATE	BY



NOTES:

1. PROVIDE SIGN MATERIALS MEETING THE REQUIREMENTS OF PUBLICATION 408, SECTION 1103.4
2. SEE PUBLICATION 236M "TRAFFIC SIGN INDEX" FOR MORE INFORMATION AND DETAILS ON EACH SIGN.
3. SIGNS R11-2-1 AND R11-3A SHOULD BE MOUNTED ON PADOT STANDARD TYPE III BARRICADES
4. SIGN R11-3B SHOULD BE PLACED OVER THE WORDS "ROAD CLOSED" ON SIGN R11-3A
5. ON SIGN W23-101 THE WORD "MAINTENANCE" SHOULD BE REPLACED WITH THE WORD "REPAIRS", AND THE WORDS "NEXT WEEK" SHOULD BE REPLACED WITH THE ANTICIPATED DATE OF BRIDGE CLOSURE. THIS SIGN SHOULD BE INSTALLED A MINIMUM 14 DAYS PRIOR TO BRIDGE CLOSURE



15 BRIDGE CLOSED SIGNAGE DETAIL

McGOEY, HAUSER and EDSALL CONSULTING ENGINEERS, D.P.C. <small>221 East Green Street Philadelphia, PA 19104 (215) 261-1100</small>			Plans for : KIMBLES ROAD BRIDGE REPAIR	
			Lockawaxen Township Pike County, PA	
Revision: 2 Date: 08/04/07 Description: CONSTRUCTION SET	Design: AT/AD Drawn: JF Checked: JF Estimated: JF Date: 5/24/07 Job No: 14-123	Scale: _____ Project No: _____ Date: _____ By: _____		SIGN INDEX C13