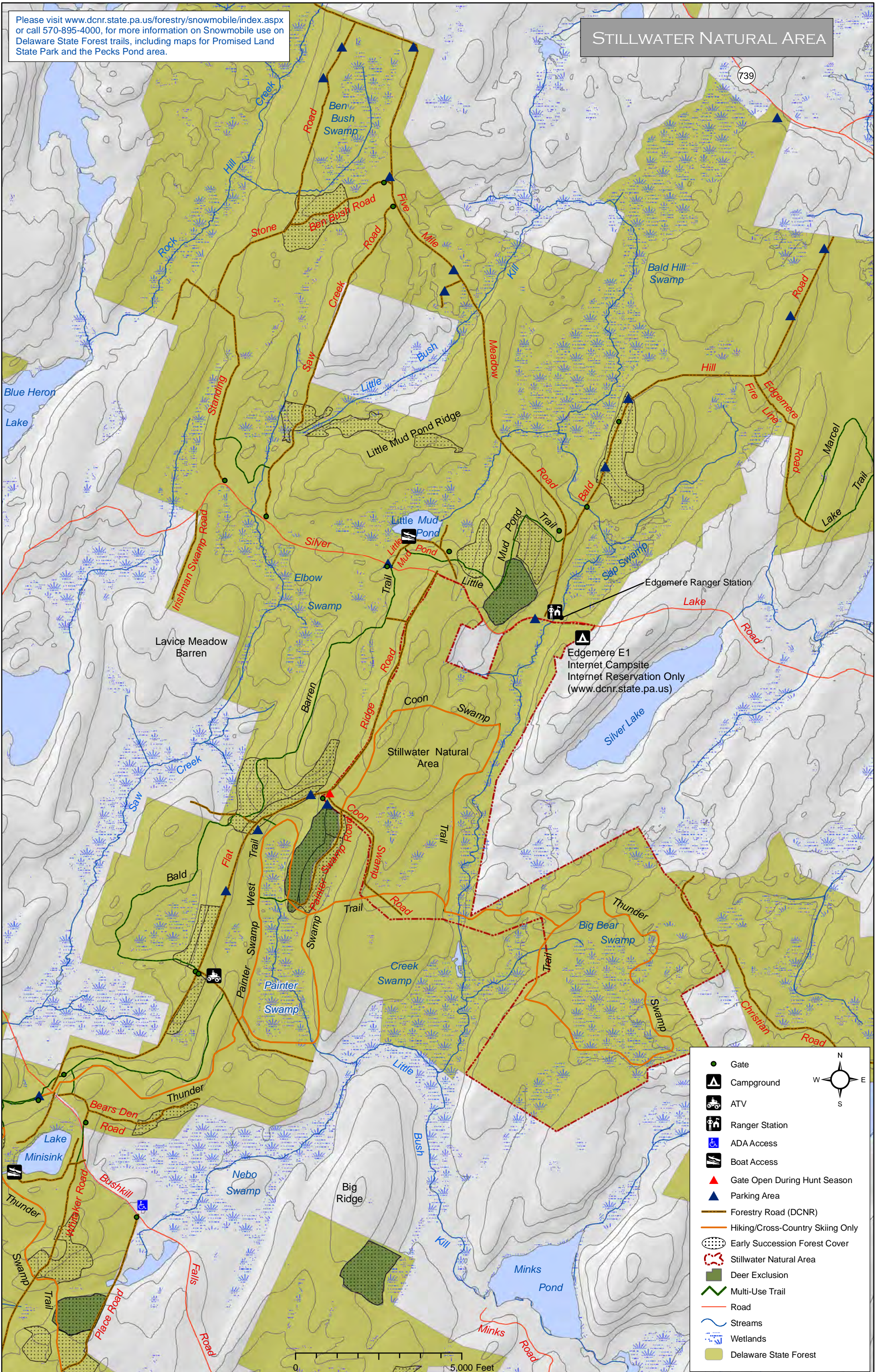


Please visit [www.dcnr.state.pa.us/forestry/snowmobile/index.aspx](http://www.dcnr.state.pa.us/forestry/snowmobile/index.aspx) or call 570-895-4000, for more information on Snowmobile use on Delaware State Forest trails, including maps for Promised Land State Park and the Pecks Pond area.

# STILLWATER NATURAL AREA



- Gate
- Campground
- ATV
- Ranger Station
- ADA Access
- Boat Access
- Gate Open During Hunt Season
- Parking Area
- Forestry Road (DCNR)
- Hiking/Cross-Country Skiing Only
- Early Succession Forest Cover
- Stillwater Natural Area
- Deer Exclusion
- Multi-Use Trail
- Road
- Streams
- Wetlands
- Delaware State Forest

0 5,000 Feet