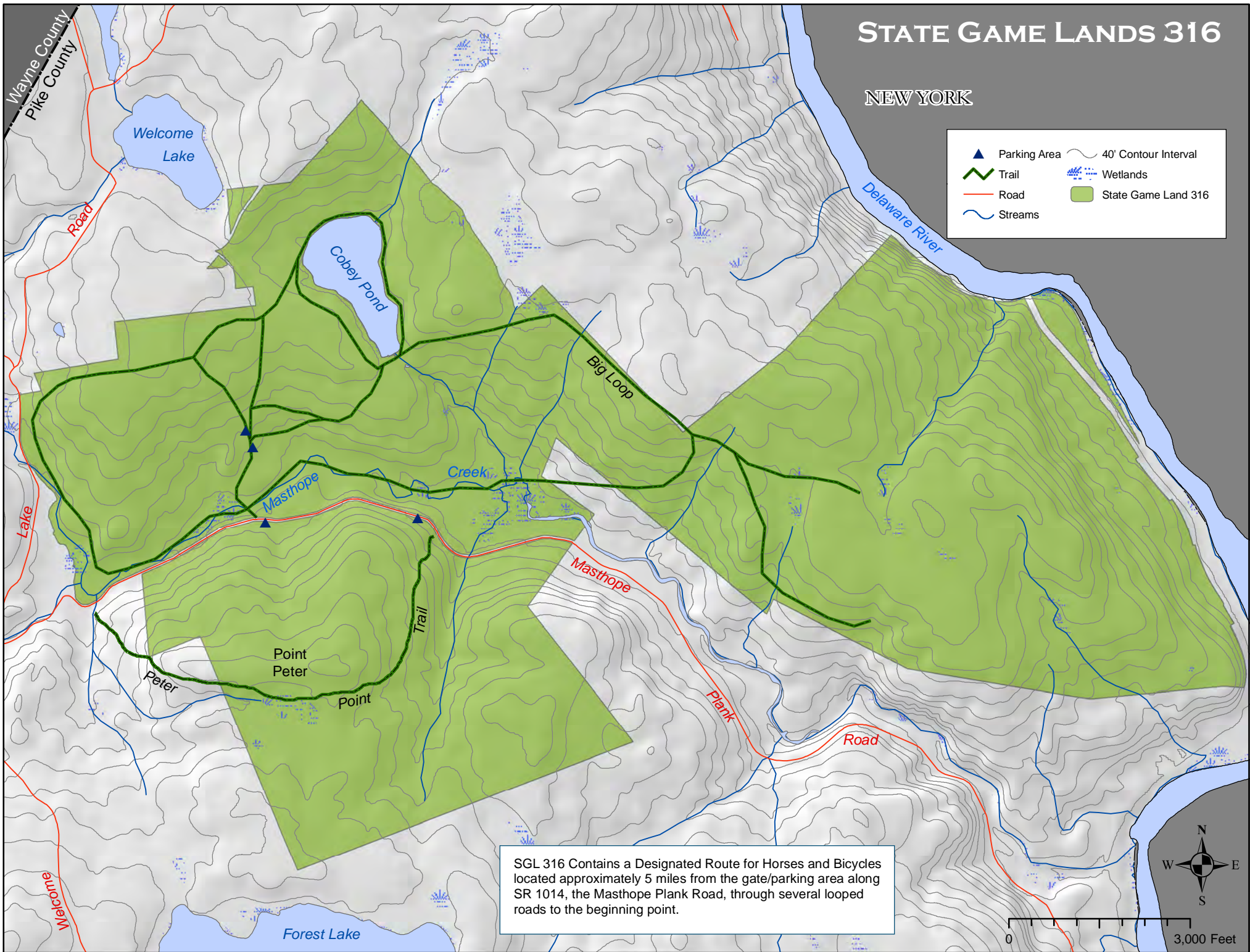


STATE GAME LANDS 316

NEW YORK

- Parking Area
- Trail
- Road
- Streams
- 40' Contour Interval
- Wetlands
- State Game Land 316



SGL 316 Contains a Designated Route for Horses and Bicycles located approximately 5 miles from the gate/parking area along SR 1014, the Masthope Plank Road, through several looped roads to the beginning point.



0 3,000 Feet